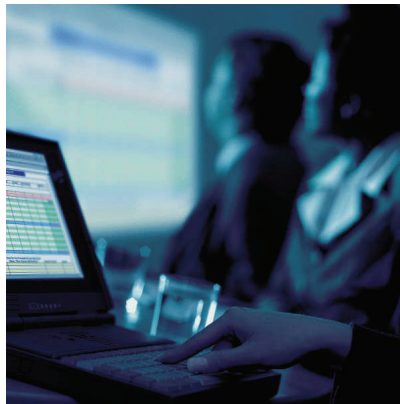


Network Makes Meeting Attendance Easier for Rural Hospitals



Kan·ed

Phone: 785-296-0843
Email: kan-ed@ksbor.org
<http://www.kan-ed.org>

Cheyenne County Hospital

Serves:

2,750+ community members,

80+ staff

Kan-ed member since:

September 4, 2002

Being in extreme Northwest Kansas doesn't always make for an easy task when it comes to attending meetings for Cheyenne County Hospital employees. "We are extremely remote...extreme Northwest Kansas...so just about everything is at least a three hour trip, which means that our travel time is more than the meeting time," says Trisha Harkness, Network Administrator for the hospital.

Cheyenne County Hospital has been using the Kan-ed network for at least three years to participate in meetings and continuing education sessions via interactive video (ITV). Using ITV "has helped with meeting costs or continuing education class costs." Harkness says by eliminating the need to travel as often. Staff members connect with KU Med, Pioneer Health Network, and other Great Plains hospitals to name a few. Harkness also shared, "Because we are part of Great Plains, our regional vice president sometimes attends our hospital board meetings [via ITV], so she doesn't have to drive from Phillipsburg."

Cheyenne County Hospital is still working on tele-medicine. "One of the plans for tele-medicine is to use it to connect to specialty doctors, say burn doctors and someone in our ER, so they could actually see patients. Not just get a description from whoever is in the room." Rather, they would see the patient, vitals and test results, then decide whether to treat or transfer the patient to another facility. "That's one of the bigger projects that we're still working on with ITV." Harkness says.